

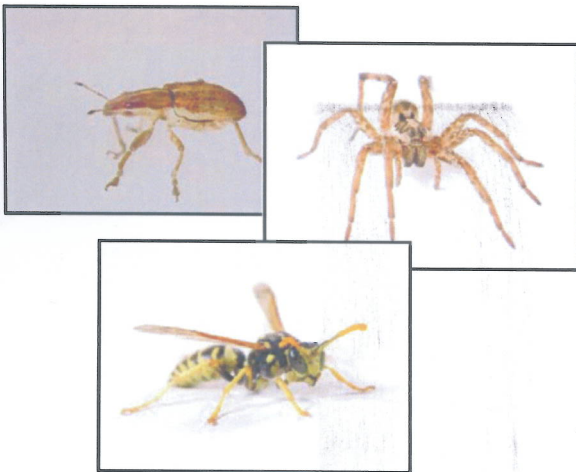


INNOVATIVE and AUSTRALIAN

PERMETHRIN D

PERMETHRIN D

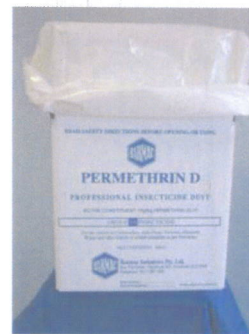
A superior pest control dust



Barmac PERMETHRIN D is a premium formulation dust containing 1% Permethrin. It is suitable for the control of Cockroaches, Spiders, Ants, Fleas, Termites and European Wasps in domestic, commercial and industrial premises.

Having many years of experience in the formulation of dusts Barmac Industries Pty Ltd developed a product which is free flowing and very light ensuring it spreads throughout a void, crack or crevice to eliminate even those insects in invisible harborages and hiding places. For best results product should be puffed or blown into roof and floor voids and other crawl spaces using a hand held or mechanical puffing unit.

For treatment of European Wasp's nests the product needs to be dusted into all the entrance holes of the nest using a hand duster. It is important that the precautions detailed on the label be adhered to in order to prevent wasp attacks.



PERMETHRIN D is also useful in controlling fleas in carpets. Simply brush the dust directly into the pile of the carpet. Do not vacuum or clean the carpet for at least 2 days to ensure the product is not wasted. Always treat areas such as under the house where larvae may develop. Remember for best results treat any pets and their bedding and sleeping areas with an approved flea product.

When used as directed **PERMETHRIN D** is a simple, safe and effective tool in pest control.

PACK SIZE:

Available in 10kg bags.



For more information about PERMETHRIN D or other BARMAC products visit www.barmac.com.au or one of our distributors.
Barmac Industries Pty Ltd Swanbank Australia

www.barmac.com.au

DIRECTIONS FOR USE :

| SITUATION | | PEST | RATE | CRITICAL COMMENTS |
|--|--|---|---|---|
| DOMESTIC, INDUSTRIAL & INSTITUTIONAL PREMISES | Food preparation & storage areas | Cockroaches, Silverfish | 10g/m ² applied with a powder blower | Blow powder into cracks and crevices. Attention should be given to areas where insects congregate ie. warm, dark areas and around heat sources (stoves, radiators, fireplaces etc). |
| | Living & sleeping areas | Ants | | Sprinkle powder around nests and along routes. When ants are invading houses treat the areas where they are entering the premises. |
| | | Fleas | | Dust powder directly into carpets & brush into pile. Also treat areas where flea larvae may develop. |
| | | Bedbugs | | Apply to bedroom furniture and mattresses as well as to any cracks, crevices or areas where insects may hide |
| ROOF VOIDS, WALL AND FLOOR VOIDS, CRAWL SPACES | Cockroaches, Silverfish, Ants, Fleas, Spiders and Bird mites (Ornithonyssus spp) | | Blow dust into all void areas, ensuring all surfaces are thoroughly treated. Repeat application if re-infestation occurs. Remove all birds nests and introduce physical bird barriers to prevent reinfestation of bird mites. | |
| MUSHROOM BEDS | Mushroom Sciarid Flies | | Dust mushroom beds when necessary. Do not apply more than twice per week. Discontinue use when mushrooms reach the size of a ten cent piece. Do not apply later than 3 days before harvest. | |
| SKIN & HIDE PREPARATION | Hide Beetles (Dermestes ater) | | Dust skins while on drying racks Dust the edges of dried baled skins. | |
| SEED POTATOES | Potato moth (Phthorimaea operculella) | 600g/Tonne or 30g/50kg bag of seed potato | Apply dust while filling storage containers. Treated seed potatoes must only be used for sowing. Do not use as food or feed. Store treated seed potatoes away from other potatoes, food or feed. Mark bags or containers where treated seed potatoes are stored indicating that the potatoes have been treated. | |
| TREES & STUMPS | Subterranean Termites (Coptotermes spp) | 250g/tree | Drill 3 holes in infested tree of no more than 12mm diameter. Apply dust directly to the nest using a carbon dioxide gas cylinder and a trigger gun. After treatment, holes should be coated carefully with an appropriate fungicide and sealed with a suitable caulking compound. | |
| WASP NESTS (All States except QLD & SA) | European wasps | 125g to 250g per nest | Apply dust through the entrance holes using a hand duster. Amount used is dependant on the size of the nest and number of entrance holes. Treat at night when wasps are least active. Operators should wear appropriate protective clothing to prevent wasp attacks (long sleeved overalls buttoned at wrist and throat, gloves, head covering and a bee veil). | |